



CHANCELLOR'S COUNCIL ON *Faculty Life*

# Faculty Development Day

September 11, 2012

## Welcome

Bonnie Halpern-Felsher, PhD

Chair, FDD

Professor, Pediatrics, SoM

Sally Marshall, PhD

Vice Provost, Academic Affairs

Distinguished Professor, PRDS, SoD

# Chancellor's Council on Faculty Life (CCFL) Activities

- **UCSF-CORO Faculty Leadership program**
- **Faculty Mentoring Program**
- **Institutional Welcoming - FDD**
- **Faculty Development**
- **Faculty Enrichment – Wellness Grand Rounds**

## 2012-2013 CALENDAR OF EVENTS

Watch for more information at <http://academicaffairs.ucsf.edu/ccfl/>

- **Mentoring Program**

- **Meet the Mentor – 12-1 pm**

- H. Carrie Chen    Oct 2    S171

- Tracey Weitz    Nov 13    S175

- Sally Marshall    Jan 7    S172

- Michael Cabana    Feb 14    LH 263

- **Mentoring month - January**

- **UCSF-Coro Faculty**

- Leadership Program**

- **Ongoing through Dec, maybe introductory version in Spring**

- **Wellness Grand Rounds**  
**TBA**

- **Faculty Development**

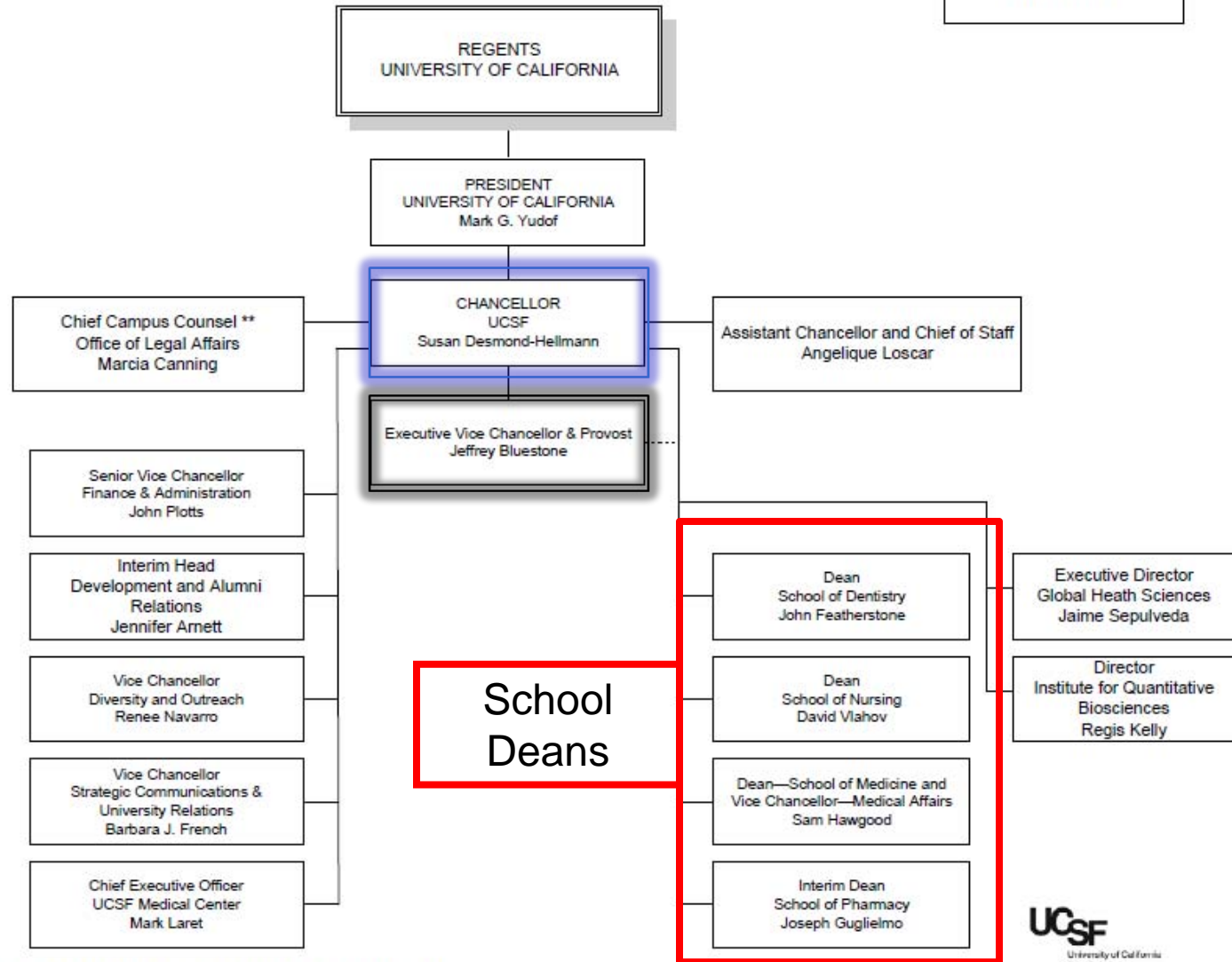
- Workshop for Assoc. Professors  
you have arrived, now what?

- Publishing workshops  
with journal editors

- Advancement and promotion  
Dates and places TBA

UNIVERSITY OF CALIFORNIA, SAN FRANCISCO  
ORGANIZATIONAL CHART

July 2012



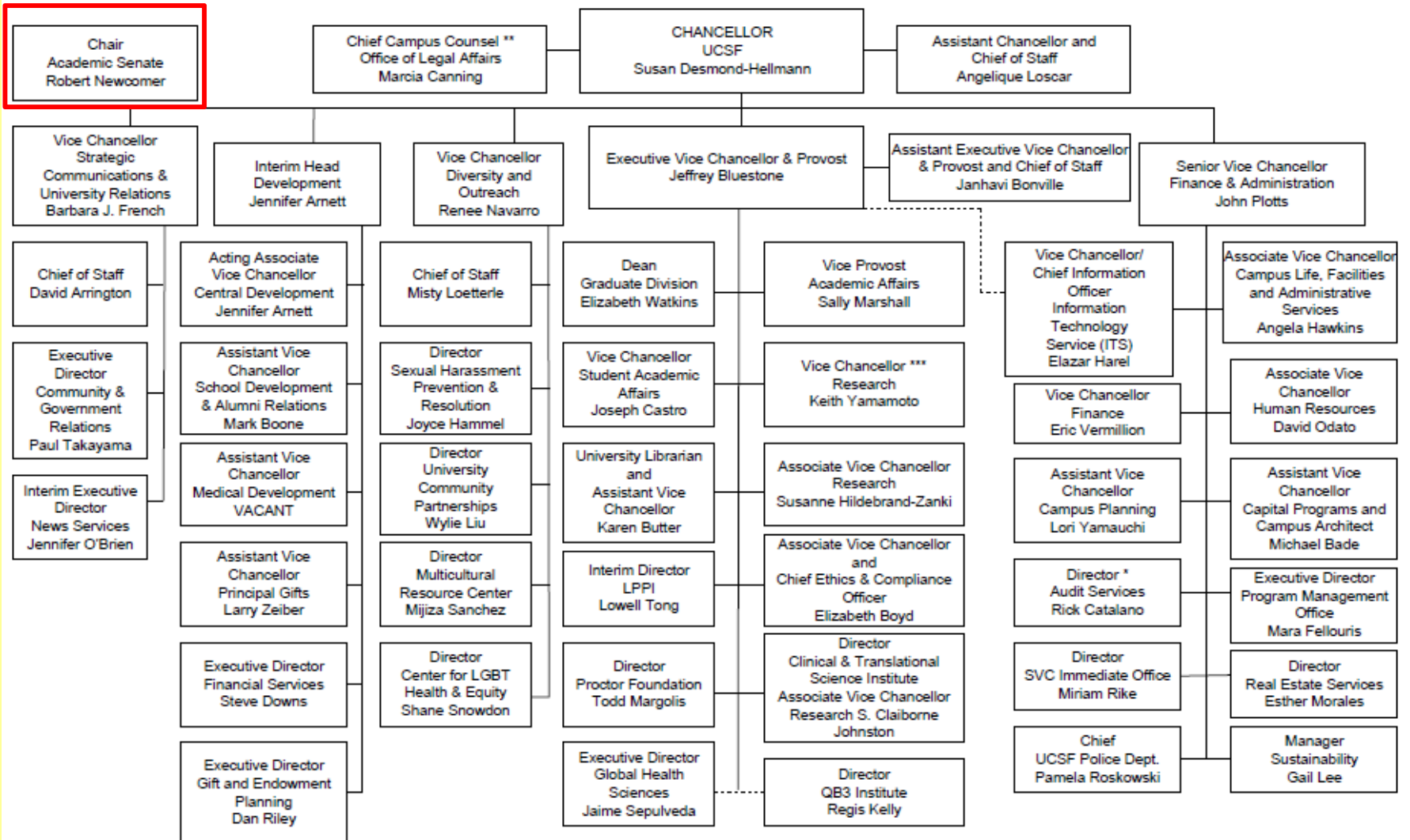
\*\* Also reports to the General Counsel/Vice President—Legal Affairs, Office of the President

**UCSF**  
University of California  
San Francisco  
advancing health and the world  
Updated 7-2-2012

# UNIVERSITY OF CALIFORNIA, SAN FRANCISCO

## CENTRAL CAMPUS ADMINISTRATION

July 2012



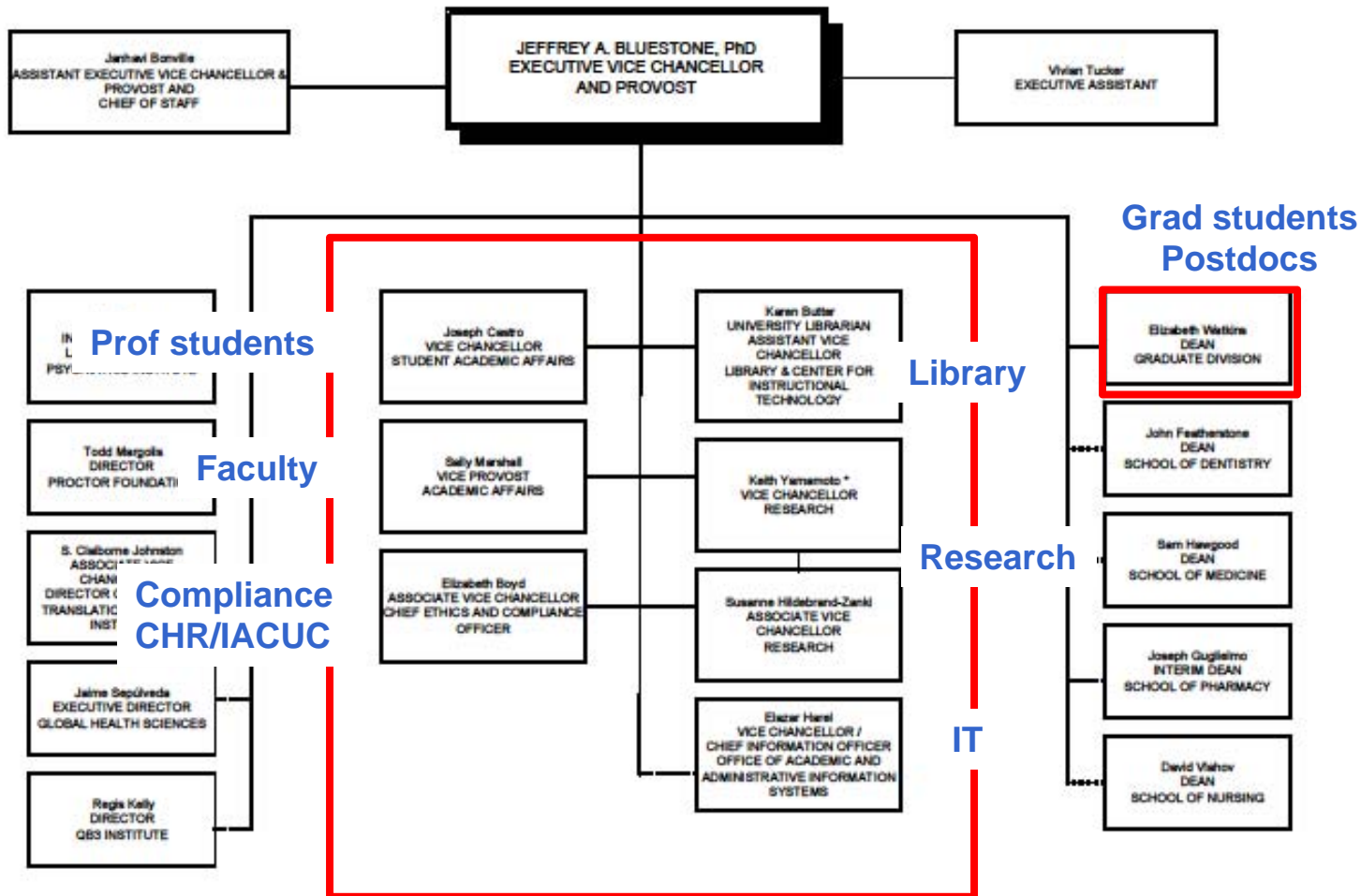
\* Also reports to the University's SVP—Compliance & Audit and has direct access to the Chancellor and The Regents

\*\* Also reports to the General Counsel/Vice President—Legal Affairs, Office of the President and has direct access to the Chancellor

\*\*\* Also reports to the Dean—School of Medicine

† These units are compliance offices with direct access to the Chancellor as needed

OFFICE OF THE EXECUTIVE VICE CHANCELLOR & PROVOST  
JULY 2012



\* Also reports to Dean—School of Medicine